



# Products Manual

**Warning Light**

**警示灯选型手册**

**Vol.15**

**赛普电气集团有限公司**

SAIP ELECTRIC GROUP CO., LTD.

电话.TEL: +86-577-62760721

传真.FAX: +86-577-62760731

邮箱.E-mail: saip@saip.cn

网址.Website: www.saipwell.com.cn

浙江省乐清市柳市工业区

Liushi Industrial Zone, Yueqing, Zhejiang, 325604 China

**上海斯普威尔电气有限公司**

SHANGHAI SAIPWELL ELECTRIC CO., LTD.

电话.TEL: +86-21-33050667

传真.FAX: +86-21-33050669

邮箱.E-mail: saip@saip.cn

网址.Website: www.saipwell.com

上海市宝山区蕰川路512号

No.512,Wenchuan Road,Baoshan District,Shanghai,201906 China





To create products  
that deliver happiness to everyone

—— 铸造充满幸福的产品 ——

# CONTENTS

Copyright © Saip ELEC. All Right Reserved  
Deliver happiness to everyone

## 目录

02

关于赛普  
About Saip

03

赛普意义  
Saip Meaning

05

赛普理念  
Saip Enterprise Concept

07

赛普的价值观  
Value Theory

09

产品介绍  
About Products

# 关于赛普

## SAIP ELEC.

Copyright © Saip ELEC. All Right Reserved  
Deliver happiness to everyone



# Us.

赛普电气集团（简称赛普）是一家专业从事电气产品及新能源的研发、制造及营销的专业化电气有限公司。赛普集团已引进国外资深管理与经验丰富的专业人事，以严谨的管理，有创意的研发团队，先进的营销理念，在传统产品的基础上创造和发展了新的更适用的且具有良好性价比的产品。Saip 产品已获得 CE、ROHS、IP66 等国内国际认证。产品已得到机关行业的认证认可，并远销东南亚、中东、东欧及美洲等地域。赛普现在有全球 28 家代理、三个直销公司。赛普已与多家国际化公司建立了良好的长期合作伙伴关系。赛普一如既往地坚持“合作发展，共同提高”的服务宗旨，以真诚的合作态度来最大程度地满足客户的需求。赛普电气—您成功的合作伙伴！

Saip Electric Group Co., Ltd ( "Saip" for short) is an enterprise specialized in the design, production and sales of all kinds of electric equipments. Our head office is in Liushi town, the largest manufacturing base of electric equipments of Wenzhou, China. It's very near to Shanghai and Ningbo ports.

Saip has five specialized branches and more than 300 specialized cooperative partners all over the world. As an ISO9001 certificated enterprise, Saip owns modern production lines, advanced quality controlling equipment with scientific administration, professional engineers, highly trained teams technicians and skilled workers.

Now Saip has five design and production bases in Hong Kong, Taiwan, Singapore, Turkey and Shanghai (China Mainland), 28 sales organizations in the world and more than 50 holding member enterprises. Saip products range covers wind energy, solar energy, low voltage apparatus, welding machines, instruments and meters, photoelectron, electrical products for construction, automobile apparatus and industrial automation. The products are sold to over 100 countries and regions. All exported products have passed through CE, ROHS, EMC, LVD, IP66, KEMA certificates.

Saip always insists on "high quality and sincere service". Saip—your successful cooperative partner.

# Meaning.

## 赛普的意义 +

### SAIP ELEC.

Copyright © Saip ELEC. All Right Reserved  
Deliver happiness to everyone

成为一家持续发展超出 103 年的企业

成为一家超出 20000 名销售员工和 2000 名设计工程师的企业

成为全球电气品牌管理专家

一家环球的高质量的电气组织

为了达到最高的质量水准

所有产品均按照 IEC 国际电工委员会的标准生产。

to be an enterprise lasting 103 years and beyond

To be an enterprise with a network of 20000 sales personnel and 2000 design engineers

To be the choice brand manager of major worldwide electrical brands

A global quality electric organization

In order to obtain the highest quality all of

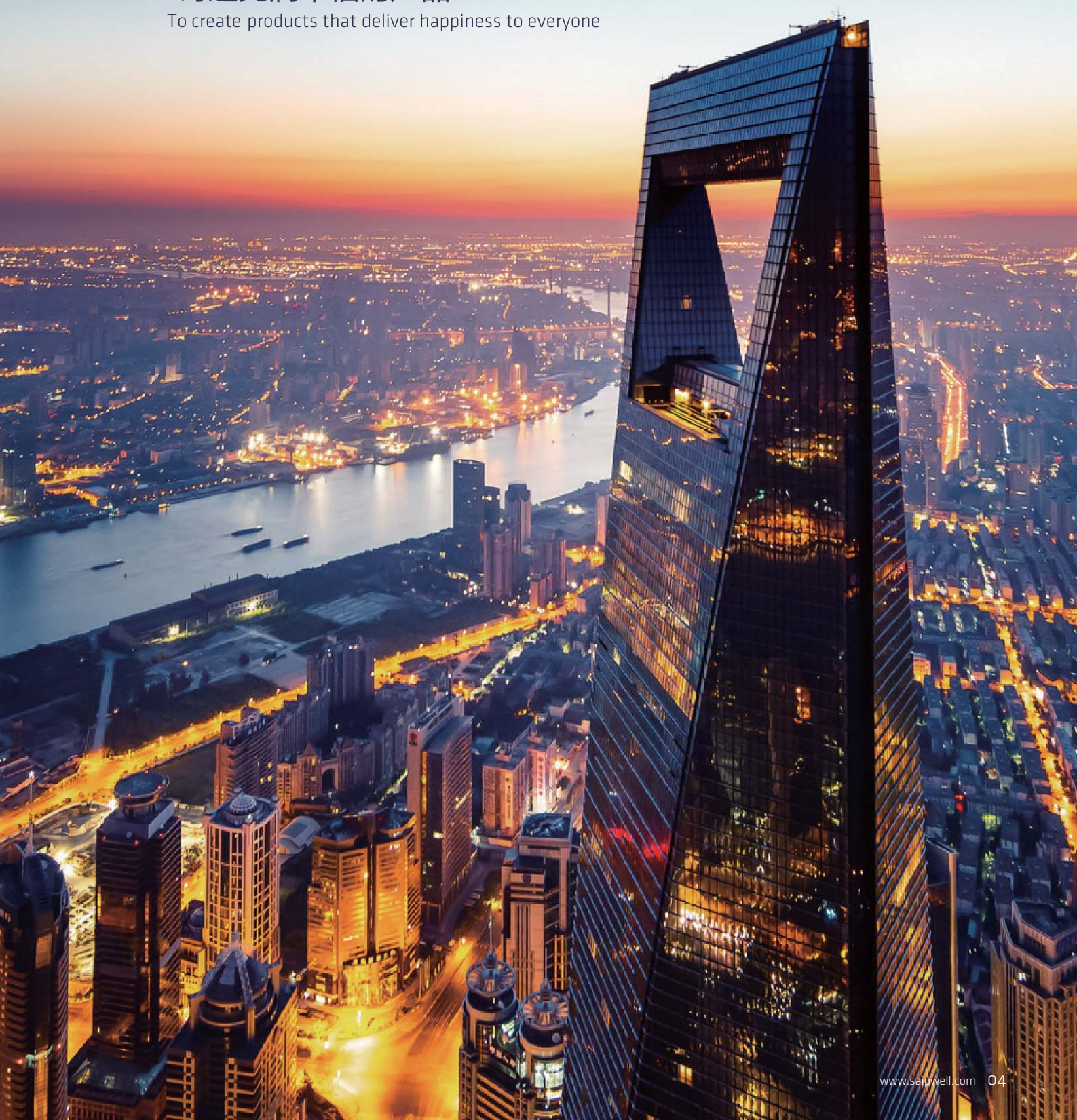
Products according to international iec normatives.





## 铸造充满幸福的产品

To create products that deliver happiness to everyone







# Concept.

赛普的理念 

**SAIP ELEC.**

Copyright © Saip ELEC. All Right Reserved  
Deliver happiness to everyone



**商业原则**  
**BUSINESS**  
**PRINCIPLE**

做简单的生意 简单地做生意  
To conduct business in a simple  
straightforward manner.

**企业精神**  
**CORPORATE**  
**SPIRIT**

耐心 细心  
Patience Dedication

**人生观**  
**HUMAN**  
**PRINCIPLE**

客户至上 员工第一 股东第二  
Customers are our topmost priority,  
followed by our employees and stakeholders

**工作观**  
**WORKING**  
**PRINCIPLE**

快乐工作 幸福生活  
To work and live happily

**产品观**  
**PRODUCT**  
**PRINCIPLE**

文化电气 / 幸福电气 / 品质电气 / 信息电气 / 便捷电气  
To manufacture quality, innovative products that bring  
convenience to its users

# Value

## 赛普的价值观

**SAIP ELEC.**

Copyright © Saip ELEC. All Right Reserved  
Deliver happiness to everyone

人人平等—充分尊重，处理问题，对事不对人  
相互信任—敢于担当深知彼此信任的力量  
奉献—乐于付出，以司为家  
坚持—专业执着，完善自我，不断进步。  
创新—承接变化，勇于创新

Equality— Fully respect, and focus on the issue rather than the person.  
Trust— Believe in the power of trust and be brave in trusting others.  
Dedication— Be willing to sacrifice and take the company as home.  
Persistence— Never say never.  
Innovation — Accept changes, and be bold to innovate.



Deliver happiness to everyone





# 铸造充满幸福的产品

To create products  
that deliver happiness to everyone

**SAIP ELECT.**

Copyright © Saip ELEC. All Right Reserved  
Deliver happiness to everyone



# Index.

Copyright © Saip ELEC. All Right Reserved  
Deliver happiness to everyone

## 产品索引

多层式指示灯 11-14  
Flashing Tower Light

小型警示灯 15-20  
Small Size Warning Light

警示灯 21-31  
Warning Light

马达警报器 32  
Motor Siren

蜂鸣器 33  
Buzzer

信号灯 34-35  
Signal Lamp

灯珠 36-37  
Led Bulb



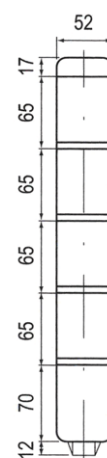
# TLW50

## TLW50 LED TOWER LIGHT

### LED多层警示灯



### 产品外形图 Dimension



### 自立安装型多层式信号指示灯

- 采用高亮度LED光源
- 采用特殊闪光灯罩提高可见度
- 采用了长寿命的高亮度的钨丝灯泡
- 有多种固定安装产品用的支架
- 闪亮数60-80/min.
- 蜂鸣内装型音量:85dB
- 主要材料: 灯罩-PC, 灯座-ABS
- 技术认证: CE
- 保护等级: IP30

- High brightness LED type
- Enhancing visibility by employing the special light diffusion globe
- Long-life and high brightness osram lamp
- Using various types of brackets with practicality and brilliant appearance
- Flashes:60-80/min
- Built-in buzzer type volume:85dB
- Material: lens-PC, Body-ABS
- Certification:CE
- Protection class :IP30

### TLW50 杆式系列 Rod Series

TLW50		-	
型号 Model		电压Votage	颜色Color
TLW50-	T(常亮Steady)	12V	■ R-红
	W(闪亮Flashing)	24V	■ O-橙
	U(常亮带蜂鸣Steady with buzzer)	110V	■ G-绿
	K(闪亮带蜂鸣Flashing with buzzer)	220V	■ B-蓝 □ W-白

TLW50		-	
型号 Model		电压Votage	颜色Color
TLW50-	T(常亮Steady)	12V	■ R-红
	W(闪亮Flashing)	24V	■ O-橙
	U(常亮带蜂鸣Steady with buzzer)	110V	■ G-绿
	K(闪亮带蜂鸣Flashing with buzzer)	220V	■ B-蓝 □ W-白

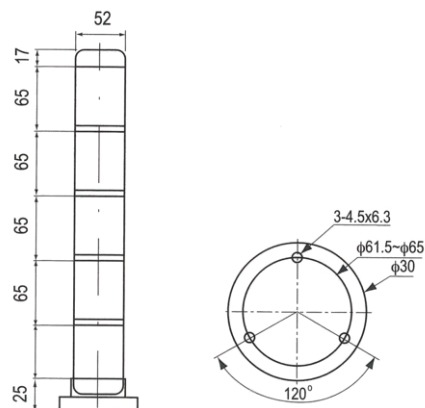
# TLW50B

TLW50B LED TOWER LIGHT

LED多层警示灯



## 产品外形图 Dimension



## 自立安装型多层式信号指示灯

- 采用高亮度LED光源
- 采用特殊闪光灯罩提高可见度
- 采用了长寿命的高亮度的钨丝灯泡
- 用盘形底座安装固定产品
- 闪亮数60-80/min.
- 蜂鸣内装型音量:85dB
- 主要材料: 灯罩-PC, 灯座-ABS
- 技术认证: CE
- 保护等级: IP30

- High brightness LED type
- Enhancing visibility by employing the special light diffusion globe
- Long-life and high brightness osram lamp
- Using various types of brackets with practicality and brilliant appearance
- Flashes:60-80/min
- Built-in buzzer type volume:85dB
- Material: lens-PC, Body-ABS
- Certification:CE
- Protection class :IP30

## TLW50B 连体座系列 Base Mounting Type

TLW50B		-	
型号 Model	电压Votage	颜色Color	
T(常亮Steady)	12V	R-红	
W(闪亮Flashing)	24V	O-橙	
U(常亮带蜂鸣Steady with buzzer)	110V	G-绿	
K(闪亮带蜂鸣Flashing with buzzer)	220V	B-蓝	
		W-白	

TLW50B		-	
型号 Model	电压Votage	颜色Color	
T(常亮Steady)	12V	R-红	
W(闪亮Flashing)	24V	O-橙	
U(常亮带蜂鸣Steady with buzzer)	110V	G-绿	
K(闪亮带蜂鸣Flashing with buzzer)	220V	B-蓝	
		W-白	

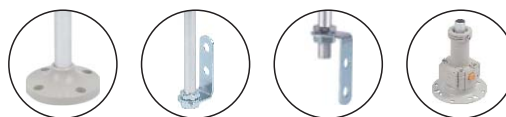
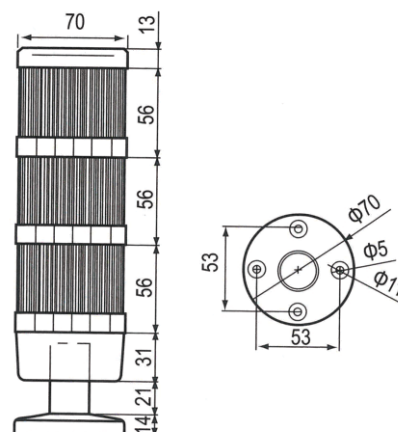
# TLW70

TLW70 LED TOWER LIGHT(STEADY/FLASHING)

LED多层警示灯(长亮/闪亮型)



## 产品外形图 Dimension



## 自立安装型多层式信号指示灯

- 采用高亮度LED光源
- 采用特殊闪光灯罩提高可见度
- 采用了长寿命的高亮度的钨丝灯泡
- 有多种固定安装产品用的支架
- 闪亮数60-80/min.
- 蜂鸣内装型音量:85dB
- 主要材料: 灯罩-PC, 灯座-ABS
- 技术认证: CE
- 保护等级: IP30

- High brightness LED type
- Enhancing visibility by employing the special light diffusion globe
- Long-life and high brightness osram lamp
- Using various types of brackets with practicality and brilliant appearance
- Flashes:60-80/min
- Built-in buzzer type volume:85dB
- Material: lens-PC, Body-ABS
- Certification:CE
- Protection class :IP30

## TLW70 系列 Series

TLW70		-	
型号 Model	电压Votage	颜色Color	
TLW70-	T(常亮Steady)	12V	■ R-红
	W(闪亮Flashing)	24V	■ O-橙
	U(常亮带蜂鸣Steady with buzzer)	110V	■ G-绿
	K(闪亮带蜂鸣Flashing with buzzer)	220V	■ B-蓝
			□ W-白

TLW70		-	
型号 Model	电压Votage	颜色Color	
TLW70-	T(常亮Steady)	12V	■ R-红
	W(闪亮Flashing)	24V	■ O-橙
	U(常亮带蜂鸣Steady with buzzer)	110V	■ G-绿
	K(闪亮带蜂鸣Flashing with buzzer)	220V	■ B-蓝
			□ W-白

# TLA60

## LED TOWER LIGHT

### LED塔灯

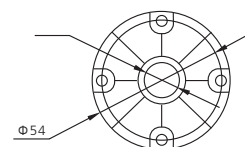
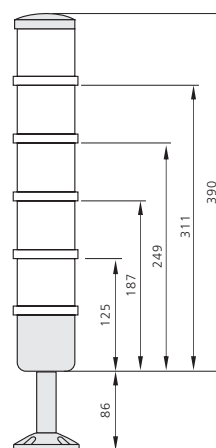


Z型 Type

Z型 Type

F型 Type

## 产品外形图 Dimension



## 自立安装型多层式信号指示灯

- 采用航空插件，方便、快捷
- 采用接线序号标识引线端，O为公共端
- 采用超高亮LED灯，视觉柔和、明亮、节能
- 灯罩采用高强度PC材质，透光性好，光线散射匀称
- 积木式旋转组合结构，可任意组合不同颜色或功能，使用便捷
- 有垂直法兰盘安装、垂直法兰盘安装+垂直侧装
- 法兰盘活动转向安装、法兰盘活动转向安装+垂直侧装四种安装方式供选用

- Using aviation plugs, quick and easy.
- Using wiring number denoted leading wire ends, 0 is common terminal.
- Using ultra-high brightness LED light, soft light, bright and energy-saving.
- Shade material is high strength PC. Visibility better, the light scattering evenly.
- Modular and spin assembly method, any color can mixed and match. Convenient using.
- Using vertical flange plate to mount, vertical flange plate and side mount.
- Flange plate steering mounted, flange plate steering mounted and vertical side mounted, four mounting way for choice.

## TLA60 系列 Series

TLA60		-	
型号 Model	电压Voltage	颜色Color	
TLA60-	T(常亮Steady)	12V	■ R-红
	W(闪亮Flashing)	24V	■ O-橙
	U(常亮带蜂鸣Steady with buzzer)	110V	■ G-绿
	K(闪亮带蜂鸣Flashing with buzzer)	220V	■ B-蓝
			□ W-白

TLW60		-	
型号 Model	电压Voltage	颜色Color	
TLA60-	T(常亮Steady)	12V	■ R-红
	W(闪亮Flashing)	24V	■ O-橙
	U(常亮带蜂鸣Steady with buzzer)	110V	■ G-绿
	K(闪亮带蜂鸣Flashing with buzzer)	220V	■ B-蓝
			□ W-白

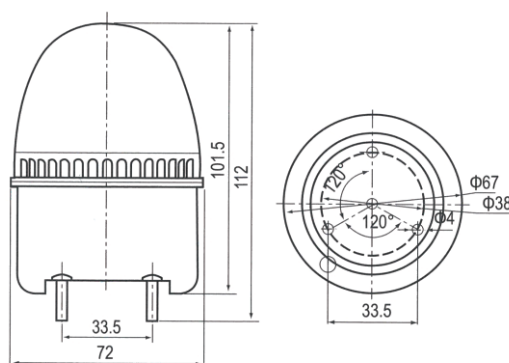
# RW-2071

SMALL SIZE WARNING LIGHT

小型警示灯



## 产品外形图 Dimension



## 采用高亮度LED光源

- 可带磁铁
- 声音可定做
- 采用高科技电子原理传递
- 使用AC电压，可按电源线选择12V-24V、220V
- 采用高亮度LED发光体
- 可内装蜂鸣器 音量：85dB
- 主要材料：灯罩-PC，灯座-ABS
- 技术认证：CE
- 保护等级：IP30

- With a magnet can be
- Sound can be customized
- Principles of using high-tech electronic transfer
- In case of product using AC voltage, 12V to 24V and 220V power supply line is employed
- High brightness LED type
- Option:buzzer applicable.Volume:85dB
- Material: Lens-PC, Body-ABS
- Certitication:CE
- Protection class :IP30

## RW-2071 系列 Series

RW-2071		
型号 Model	电压Votage	颜色Color
RW-2071	12V	■ R-红
	24V	■ O-橙
	110V	■ G-绿
	220V	■ B-蓝
		□ W-白

RW-2071		
型号 Model	电压Votage	颜色Color
RW-2071	12V	■ R-红
	24V	■ O-橙
	110V	■ G-绿
	220V	■ B-蓝
		□ W-白

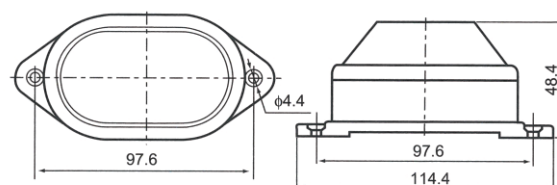
# RW-3051(5051)

SMALL SIZE WARNING LIGHT

小型警示灯



产品外形图 Dimension



## 采用高亮度LED光源

- 采用高亮度LED
- 可带磁铁
- 声音可定做
- 用圆形底盘固定, 使得安装更为方便
- 采用高科技电子原理传递
- 使用AC电压, 可按电源线选取12V-24V DC/AC 220V
- 主要材料: 灯罩-PC, 灯座-ABS
- 技术认证:CE
- 保护等级: IP30

- High brightness LED type
- With a magnet can be
- Sound can be customized
- Circular chassis with fixed, making installation easier.
- Principles of using high-tech electronic transfer
- In case of product using AC voltage, 12V to 24V DC/AC 220V power supply line is employed
- Material: Lens-PC, Body-ABS
- Certification: CE
- Protection class: IP30

## RW-3051系列 Series

RW-3051		
型号 Model	电压 Voltage	颜色 Color
RW-3051	12V	■ R-红
	24V	■ O-橙
	110V	■ G-绿
	220V	■ B-蓝
		□ W-白



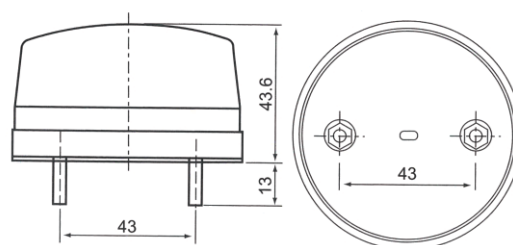
# RW-3071(5071)

SMALL SIZE WARNING LIGHT

小型警示灯



## 产品外形图 Dimension



## 采用高亮度LED光源

- 采用高亮度LED
- 用圆形底盘固定，使得安装更为方便
- 采用高科技电子原理发光
- 使用AC电压，可按电源线选选择24V-12V DC
- 主要材料：灯罩-PC，灯座-ABS
- 技术认证：CE
- 保护等级：IP30
- High brightness LED type
- Circular chassis with fixed, making installation easier.
- Principles of using high-tech electronic transfer
- In case of product using AC voltage, 12V to 24V DC power supply line is employe
- Material: Lens-PC, Body-ABS
- Certification: CE
- Protection class: IP30

## RW-3071 系列 Series

RW-3071		-
型号 Model	电压Voltage	颜色Color
RW-3071	12V	■ R-红
	24V	■ O-橙
	110V	■ G-绿
	220V	■ B-蓝
		□ W-白

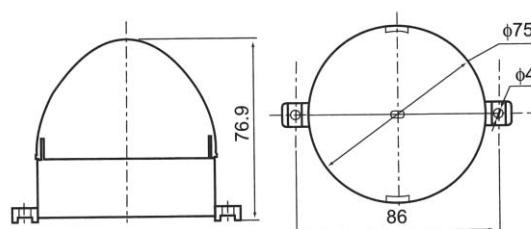
# RW-3072(5072)

SMALL SIZE WARNING LIGHT

小型警示灯



## 产品外形图 Dimension



## 采用高亮度LED光源和散光效果 优异的灯罩

- 采用高亮度LED
- 用圆形底盘固定，使得安装更为方便
- 采用高科技电子原理发光
- 使用AC电压，可按电源线选选择24V-12V DC
- 主要材料：灯罩-PC，灯座-ABS
- 技术认证：CE
- 保护等级：IP30
- High brightness LED type
- Circular chassis with fixed, making installation easier.
- Principles of using high-tech electronic transfer
- In case of product using AC voltage, 12V to 24V DC power supply line is employe
- Material: Lens-PC, Body-ABS
- Certification: CE
- Protection class: IP30

## RW-3072 系列 Series

RW-3072		-
型号 Model	电压Voltage	颜色Color
RW-3072	12V	■ R-红
	24V	■ O-橙
	110V	■ G-绿
	220V	■ B-蓝
		□ W-白

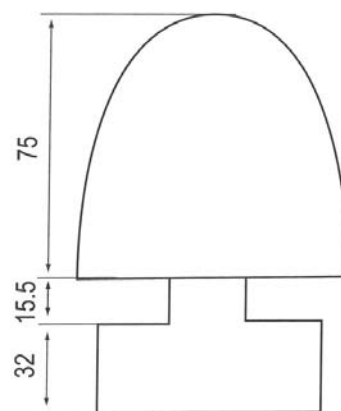
# RW-TX

SMALL SIZE WARNING LIGHT

小型警示灯



## 产品外形图 Dimension



LED—长亮/闪亮指示灯  
LED Steady/Flashing Light

## 适用于更换灯泡困难的场所

- 采用高亮度的LED作光源
- 产品可分长亮/闪亮/转2种发光形式
- 适用于振动或冲击较大和对光源要求较高的机器设备
- 主要材料：灯罩—PC，灯座—ABS
- 保护等级：IP30
- High brightness LED lamps
- Having a built-in switch for steady / flashing selection.
- Semi-permanent in the self-life of light source and suitable for Machines having lots of vibration and impact and for places Where bulb chang is difficult.
- Material: Lens—PC, Body—ABS
- Protection class: IP30

## RW-TX系列 Series

RW-TX		-
型号 Model	电压Votage	颜色Color
RW-TX	12V	■ R-红
	24V	■ O-橙
	110V	■ G-绿
	220V	■ B-蓝
		□ W-白

# RW-5041

SMALL SIZE WARNING LIGHT

小型警示灯

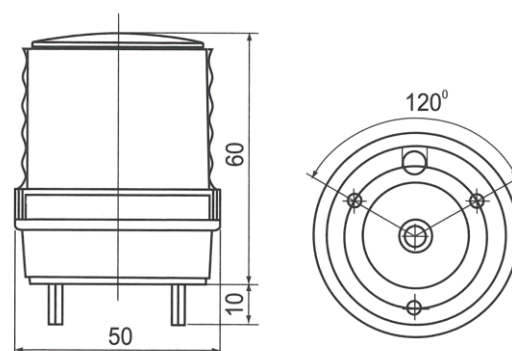


LED—长亮/闪亮  
LED Steady/Flashing

## 采用高亮度LED光源

- 采用高亮度LED
- 用圆形底盘固定，使得安装更为方便
- 采用高科技电子原理传递
- 使用AC电压，可按电源线选取12V-24V DC/AC 220V
- 主要材料：灯罩-PC，灯座-ABS
- 技术认证：CE
- 保护等级：IP30
- High brightness LED type
- Circular chassis with fixed, making installation easier.
- Principles of using high-tech electronic transfer
- In case of product using AC voltage, 12V to 24V DC/AC 220V power supply line is employed
- Material: Lens-PC, Body-ABS
- Certification: CE
- Protection class: IP30

## 产品外形图 Dimension



## RW-5041 系列 Series

RW-5041		
型号 Model	电压 Voltage	颜色 Color
RW-TX	12V	■ R-红
	24V	■ O-橙
	110V	■ G-绿
	220V	■ B-蓝
		□ W-白

RW-5041J		
型号 Model	电压 Voltage	颜色 Color
RW-5041J	12V	■ R-红
	24V	■ O-橙
	110V	■ G-绿
	220V	■ B-蓝
		□ W-白

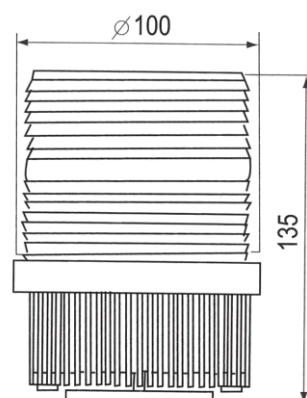
# RW-5100

## WARNING LIGHT

### 警示灯



## 产品外形图 Dimension



LED—电子原理转动 长亮/闪亮 指示灯  
LED Electronic Principles rotation  
Steady / Flashing Light

### 选择闪光效果优异的 灯罩提高可见度

- 可带磁铁
- 高亮度LED
- 采用高科技电子原理传递
- 产品可分为长亮/闪亮/转3种发光形式
- RW-5100—支杆设置，固定安装更加简便
- 主要材料:灯罩—PC，灯座—ABS
- 技术认证:CE
- 保护等级:IP30
- With a magnet can be
- High brightness LED type
- Principles of using high-tech electronic transfer
- Having the built-in switch for steady/flashing selection
- Product of RW-5100 type is easy to be installed with fitting bracker attached
- Material: Lens-PC, Body-ABS
- Certification:CE
- Protection class: IP30

## RW-5100系列 Series

RW-TX		
型号 Model	电压Votage	颜色Color
RW-5100	12V	■ R-红
	24V	■ O-橙
	110V	■ G-绿
	220V	■ B-蓝
		□ W-白

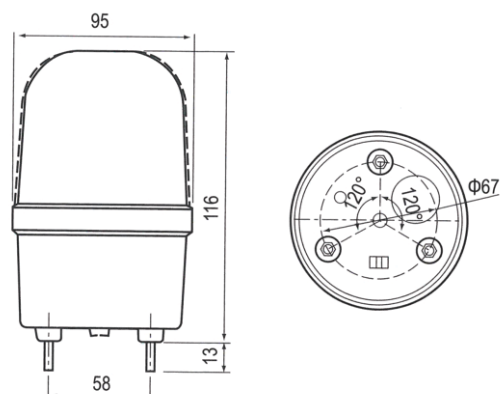
# RW-1101

## WARNING LIGHT

### 警示灯



## 产品外形图 Dimension



## LED-高科技原理转动长亮/闪亮 指示灯

### LED Principles of high-tech turn

### Steady / Flashing Light

## 采用高亮度LED光源和散光效果 优异的灯罩

- 可带磁铁
- 采用高亮度LED
- 声音可定做
- 用圆形底盘固定, 使得安装更为方便
- 采用高科技电子原理传递
- 使用AC电压, 可按电源线选取24V-12V DC
- 主要材料: 灯罩-PC, 灯座-ABS
- 技术认证: CE
- 保护等级: IP30

- With a magnet can be
- High brightness LED type
- Sound can be customized
- Circular chassis with fixed, making installation easier
- Principles of using high-tech electronic transfer
- In case of product using AC voltage, 12V to 24V DC power supply line is employed
- Material: Lens-PC, Body-ABS
- Certification: CE
- Protection class: IP30

## RW-1101 系列 Series

RW-1101		
型号 Model	电压Voltage	颜色Color
RW-1101	12V	■ R-红
	24V	■ O-橙
	110V	■ G-绿
	220V	■ B-蓝
		□ W-白

RW-1101J		
型号 Model	电压Voltage	颜色Color
RW-1101J	12V	■ R-红
	24V	■ O-橙
	110V	■ G-绿
	220V	■ B-蓝
		□ W-白



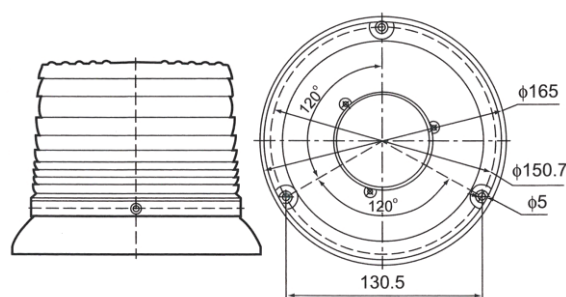
# RW-400

## WARNING LIGHT

### 警示灯



## 产品外形图 Dimension



## LED-高科技原理转动 频闪/闪亮 指示灯

### LED Principles of high-tech turn

### Steady / Flashing Light

## 采用高亮度LED光源和散光效果

### 优异的灯罩

- 采用高亮度LED 灯
- 可带磁铁
- 用圆形底盘固定，使得安装更为方便
- 采用高科技电子原理传递
- 使用AC电压，可按电源线选取择12V-24V DC/AC 220V
- 主要材料:灯罩-PC，灯座-ABS
- 技术认证:CE
- 保护等级:IP30

- High brightness LED type
- With a magnet can be
- Circular chassis with fixed, making installation easier.
- Principles of using high-tech electronic transfer
- In case of product using AC voltage, 12V to 24V DC power supply line is employe
- Material: Lens-PC, Body-ABS
- Certitication:CE
- Protection class: IP30

## RW-400系列 Series

RW-400		-
型号 Model	电压Votage	颜色Color
RW-400	12V	■ R-红
	24V	■ O-橙
	110V	■ G-绿
	220V	■ B-蓝
		□ W-白

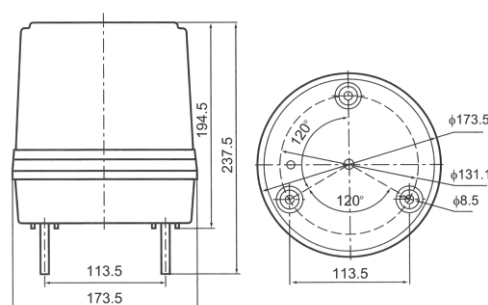
# RW-1181

## WARNING LIGHT

### 警示灯



## 产品外形图 Dimension



## LED—高科技原理转动 频闪/闪亮 指示灯

### LED Principles of high-tech turn

### Steady / Flashing Light

## 采用高亮度LED光源和散光效果

### 优异的灯罩

- 采用高亮度LED
- 可带磁铁
- 用圆形底盘固定，使得安装更为方便
- 采用高科技电子原理传递
- 使用AC电压，可按电源线选取择12V-24V DC/AC 220V
- 主要材料：灯罩-PC，灯座-ABS
- 技术认证:CE
- 保护等级：IP30

- High brightness LED type
- With a magnet can be
- Circular chassis with fixed, making installation easier.
- Principles of using high-tech electronic transfer
- In case of product using AC voltage, 12Vto24V DC/AC 220V power supply line is employe
- Material: Lens-PC, Body-ABS
- Certification:CE
- Protection class: IP30

## RW-1181系列 Series

RW-1181		-
型号 Model	电压Votage	颜色Color
RW-1181	12V	■ R-红
	24V	■ O-橙
	110V	■ G-绿
	220V	■ B-蓝
		□ W-白

# RW-1201

## WARNING LIGHT

### 警示灯



### LED-高科技原理转动 频闪/闪亮 指示灯

### LED Principles of high-tech turn

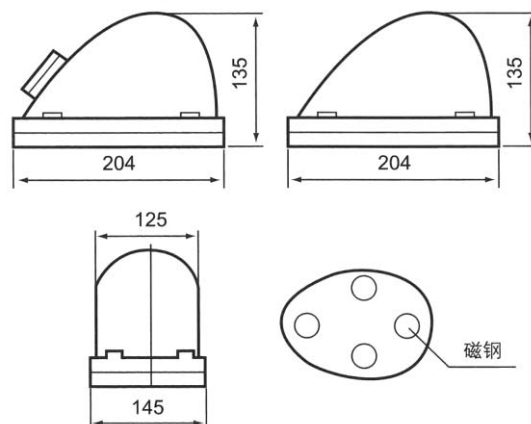
### Steady / Flashing Light

### 采用高亮度LED光源

- 采用高亮度LED
- 可带磁铁
- 声音可定做
- 用圆形底盘固定，使得安装更为方便
- 采用高科技电子原理传递
- 使用AC电压，可按电源线选取12V-24V DC/AC 220V
- 主要材料：灯罩-PC，灯座-ABS
- 技术认证:CE
- 保护等级：IP30

- High brightness LED type
- With a magnet can be
- Sound can be customized
- Circular chassis with fixed, making installation easier.
- Principles of using high-tech electronic transfer
- In case of product using AC voltage, 12V to 24V DC/AC 220V power supply line is employed
- Material: Lens-PC, Body-ABS
- Certification: CE
- Protection class: IP30

### 产品外形图 Dimension



### RW-1201 系列 Series

RW-1101		-
型号 Model	电压Voltage	颜色Color
RW-1201	12V	■ R-红
	24V	■ O-橙
	110V	■ G-绿
	220V	■ B-蓝
		□ W-白

RW-1101J		-
型号 Model	电压Voltage	颜色Color
RW-1201J	12V	■ R-红
	24V	■ O-橙
	110V	■ G-绿
	220V	■ B-蓝
		□ W-白

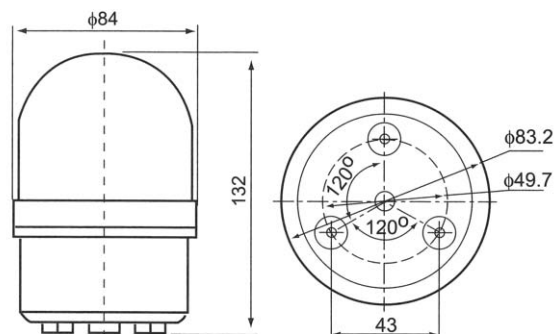
# RW-1081

## WARNING LIGHT

### 警示灯



## 产品外形图 Dimension



## LED-高科技原理转动 频闪/闪亮 指示灯

### LED Principles of high-tech turn

### Steady / Flashing Light

## 采用高亮度LED光源和散光效果 优异的灯罩

- 采用高亮度LED
- 声音可定做
- 用圆形底盘固定, 使得安装更为方便
- 采用高科技电子原理传递
- 使用AC电压, 可按电源线选选择12V-24V DC/AC 220V
- 主要材料: 灯罩-PC, 灯座-ABS
- 技术认证: CE
- 保护等级: IP30

- High brightness LED type
- With a magnet can be
- Sound can be customized
- Circular chassis with fixed, making installation easier.
- Principles of using high-tech electronic transfer
- In case of product using AC voltage, 12V to 24V DC/AC 220V power supply line is employed
- Material: Lens-PC, Body-ABS
- Certification: CE
- Protection class: IP30

## RW-1081 系列 Series

RW-1081		
型号 Model	电压Voltage	颜色Color
RW-1081	12V	■ R-红
	24V	■ O-橙
	110V	■ G-绿
	220V	■ B-蓝
		□ W-白

RW-1081J		
型号 Model	电压Voltage	颜色Color
RW-1081	12V	■ R-红
	24V	■ O-橙
	110V	■ G-绿
	220V	■ B-蓝
		□ W-白

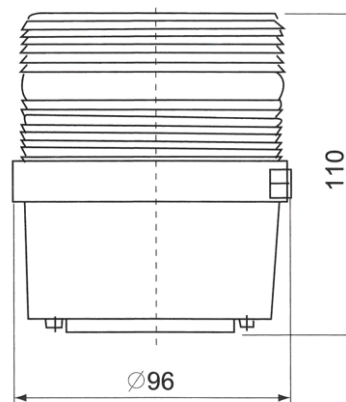
# RW-5092

## WARNING LIGHT

警示灯



## 产品外形图 Dimension



### LED-高科技原理转动 频闪/闪亮 指示灯

LED Principles of high-tech turn

Steady / Flashing Light

### 选择闪光效果优异的

### 灯罩提高可见度

- 可带磁铁
- 声音可定做
- 高亮度LED
- 采用高科技电子原理传递
- 产品可分长亮/闪亮/转3种发光形式
- RW-5092-支杆设置，固定安装更加简便
- 主要材料:灯罩-PC，灯座-ABS
- 技术认证:CE
- 保护等级:IP30

- With a magnet can be
- Sound can be customized
- High brightness LED type
- Principles of using high-tech electronic transfer
- Having the built-in switch for steady / flashing selection.
- Product of RW-5092 type is easy to be installed with fitting bracker attached
- Material: Lens-PC, Body-ABS
- Certification:CE
- Protection class: IP30

## RW-5092系列 Series

RW-5092		
型号 Model	电压Votage	颜色Color
RW-5092	12V	■ R-红
	24V	■ O-橙
	110V	■ G-绿
	220V	■ B-蓝
		□ W-白

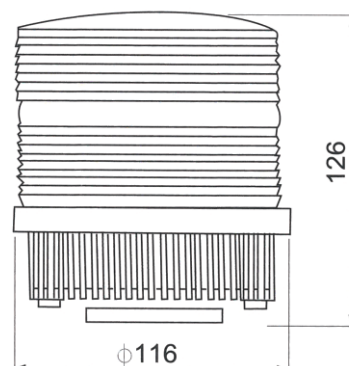
# RW-5111

## WARNING LIGHT

### 警示灯



## 产品外形图 Dimension



### LED—高科技原理转动 频闪/闪亮 指示灯

LED Principles of high-tech turn

Steady / Flashing Light

### 采用高亮度LED光源和散光效果

### 优异的灯罩

- 可带磁铁
- 可旋转
- 声音可定做
- 高亮度LED
- 采用高科技电子原理传递
- 产品可分长亮/闪亮/转3种发光形式
- S5092—支杆设置，固定安装更加简便
- 主要材料:灯罩—PC，灯座—ABS
- 技术认证:CE
- 保护等级:IP30
- With a magnet can be
- Rotating
- Sound can be customized
- High brightness LED type
- Circular chassis with fixed, making installation easier.
- Principles of using high-tech electronic transfer
- Having the built-in switch for steady/flashing selection.
- Product of RW-5111 type is easy to be installed with fitting bracker attached
- Material: Lens—PC, Body—ABS
- Certification:CE
- Protection class: IP30

## RW-5111系列 Series

RW-5111		-
型号 Model	电压Voltage	颜色Color
RW-5111	12V	■ R-红 Red
	24V	■ O-橙 Orange
	110V	■ G-绿 Green
	220V	■ B-蓝 Blue

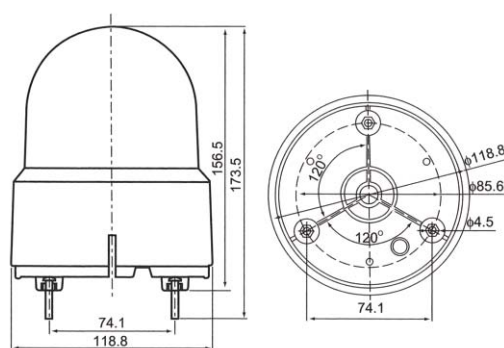
# RW-1122

WARNING LIGHT

警示灯



## 产品外形图 Dimension



LED-频闪/闪亮/旋转  
LED Strobe / Flashing / Rotary

## 采用高亮度LED光源

- 可带磁铁
- 采用高科技电子原理传递
- 采用高亮度LED发光体
- 主要材料:灯罩-PC, 灯座-ABS
- 技术认证:CE
- 保护等级:IP30
- With a magnet can be
- Principles of using high-tech electronic transfer
- High brightness LED type
- Material: Lens-PC, Body-ABS
- Certification:CE
- Protection class :IP30

## RW-1122系列 Series

RW-1122		-
型号 Model	电压Votage	颜色Color
RW-1122	12V	■ R-红
	24V	■ O-橙
	110V	■ G-绿
	220V	■ B-蓝
		□ W-白



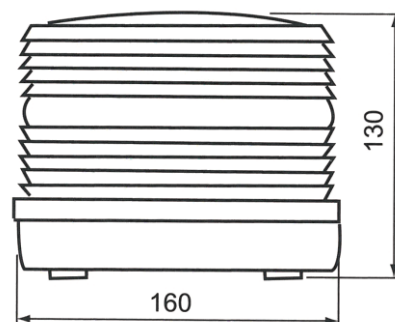
# RW-5163

## WARNING LIGHT

### 警示灯



## 产品外形图 Dimension



LED-电子原理转动 频闪/闪亮 指示灯  
LED Electronic Principles rotation  
Steady / Flashing Light

## 选择闪光效果的优异的灯罩 提高可见度

- 可带磁铁
- 声音可定做
- 高亮度LED
- 采用高科技电子原理传递
- 产品可分长亮/闪亮/转3种发光形式
- RW-5163-支杆设置，固定安装更加简便
- 主要材料：灯罩-PC，灯座-ABS
- 技术认证:CE
- 保护等级：IP30
- With a magnet can be
- High brightness LED type
- Principles of using high-tech electronic transfer
- Having the built-in switch for steady/flashing/Rotary selection
- Product of RW-5163 type is easy to be installed with fitting bracker attached
- Material: Lens-PC, Body-ABS
- Certitication:CE
- Protection class: IP30

## RW-5163系列 Series

RW-5163		
型号 Model	电压Votage	颜色Color
RW-5163	12V	■ R-红
	24V	■ O-橙
	110V	■ G-绿
	220V	■ B-蓝
		□ W-白

# RW-1101-MCL

## WARNING LIGHT

### 多色LED警示灯



#### LED-高科技原理转动 旋转/闪亮 警示灯

LED Principles Of High-tech Turn

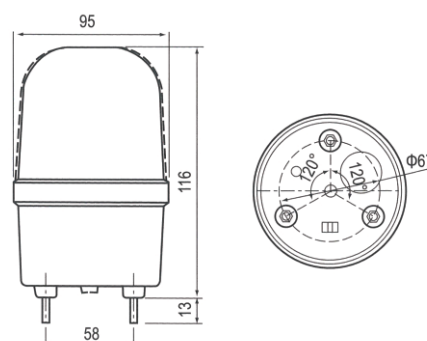
Rotary / Flashing Light

#### 采用高亮度LED光源和散光效果

#### 优异的灯罩

- 可带磁铁
- 声音可定做
- 采用高亮度LED灯
- 用一个指示灯传递2-3个不同颜色光信号的经济型产品
- 壳体把LED光度有有效的聚集, 提高了远距离的亮度
- 利用特殊壳体面增加LED的亮度
- 闪亮数60-80/min
- 可内装蜂鸣器, 音量85dB
- 主要材料: 灯罩-PC, 灯座ABS
- 技术认证: CE
- 保护等级: IP30
- With a magnet can be
- Sound can be customized
- High brightness LED lamps
- Economical product that can transmit 2 to 3 colors signal by using only one signal light
- Employing the special cage that effectively accumulates LED light and emits a concentrated signal light like that in filament, ensuring high visibility from a distant place
- Employing the special cage that considerably improves a main disadvantage of LED, that is, low visibility at a bright place
- Flashes/min.: 60-80/min
- Built-in buzzer type volume: 85dB
- Material: Lens-PC, Body-ABS
- Certification: CE
- Protection class: IP30

#### 产品外形图 Dimension



#### RW-1101-MCL系列 Series

RW-1101		-
型号 Model	电压Voltage	颜色Color
RW-1101-MCL	12V	■ R-红
	24V	■ O-橙
	110V	■ G-绿
	220V	■ B-蓝
		□ W-白

RW-1101J		-
型号 Model	电压Voltage	颜色Color
RW-1101J-MCL	12V	■ R-红
	24V	■ O-橙
	110V	■ G-绿
	220V	■ B-蓝
		□ W-白

# LMS-190/290/390

## MOTOR SIREN

### 马达警报器



LMS-190

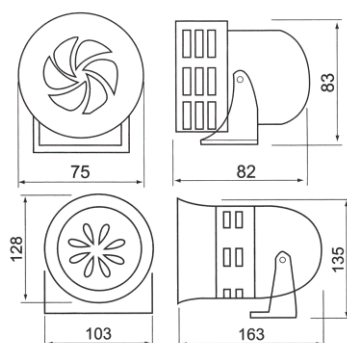


LMS-290



LMS-390

### 产品外形图 Dimension



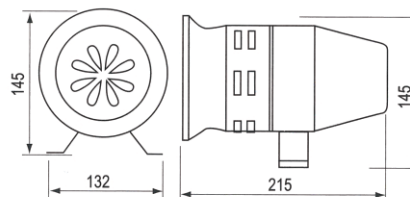
### LMS-190/290 微型 马达警报器

#### MINIATURE MOTOR SIREN

#### 迷你型马达警报器，适合在小型机器上传递信号

- 外径80/100mm，功率达到40W
- 适合在小型升降机，运输车，小型船舶机械仓等处传递信号
- 标准颜色：红色(LMS-190)&灰色(LMS-290)
- 外壳材料：铁
- 绝缘阻抗：100MΩ(at 500 VDC)
- 耐电压：500VAC,50/60Hz in 1 minute
- 保护等级：IP40
- Miniature motor siren with the external diameter of 80/100mm which makes the output of 40w sound volume
- Suitable for warning information of small hoist, light transfer cars and the inside of small vessel
- Body standard color: RED(LMS-190)&GRAY(LMS-290)
- Material: STEEL
- Insulation resistance: 100MΩ(at 500 VDC)
- Dielectric strength: 500VAC, 50/60Hz in 1 minute
- Protection class: IP40

### 产品外形图 Dimension



### LMS-390 重负荷型 马达警报器

#### HEAVY DUTY MOTOR SIREN

- 寿命长，声音广，传播距离远
- 适合在各种起重机，船舶，火灾警报系统中传递信号
- 标准颜色：红色
- 外壳材料：铝&铁
- 绝缘阻抗：100MΩ(at 500 VDC)
- 耐电压：500VAC,50/60Hz in 1 minute
- 保护等级：IP40
- High in durability and excellent in remote signal transmission due to high volume capacity
- Suitable for warning types of cranes, vessels and fire warning systems
- Body standard color: RED
- Material: ALUMINUM & IRON
- Insulation resistance: 100MΩ(at 500 VDC)
- Dielectric strength: 500VAC, 50/60Hz in 1 minute
- Protection class: IP40

# OB-F75/F80/F25

BUZZER

蜂鸣器

## 产品 Products



OB-F75

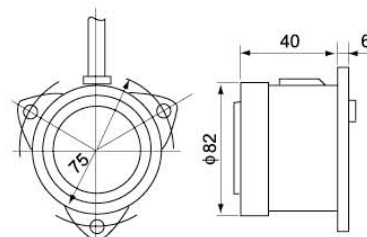


OB-F80

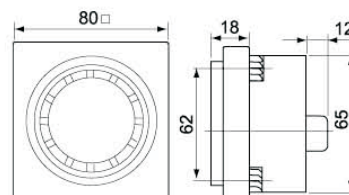


OB-F25

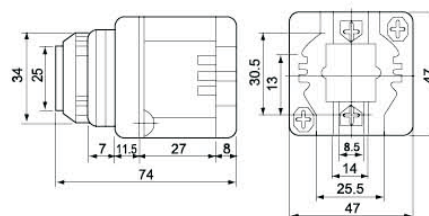
## 产品外形图 Dimension



OB-F75



OB-F80



OB-F25

产品型号	OB-F75	OB-F80	OB-F25
工作电压	AC110V/220V DC12V/24V	AC110V/220V DC12V/24V	AC110V/220V DC12V/24V
额定电流 (mA)	65mA/AC220V	65mA/AC220V	65mA/AC220V
声压 (分贝)	112	80	80
发声形式	连接声	带声源	带声源
可选音源	AC:机械声 DC:电子声	AC:机械声 DC:电子声	AC:机械声 DC:电子声

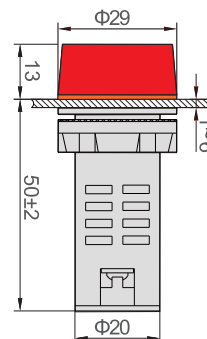
# AD16-22DS

SIGNAL LAMP、INDICATOR

信号灯、指示灯



## 产品外形图 Dimension



## 适用范围 Application

AD16-22DS系列信号灯适用于交直流电压50Hz/60Hz,额定电压至380V及以下,直流额定工作电压380V及以下的电气线路中作为指挥信号,事故信号及其他指示信号之用。

AD16-22DS series of small metal shell lights suitable for AC and DC voltage 50Hz / 60Hz, rated DC Pressure to 220V and below, as the command signal, accident signal and other instructions with the signal of the electrical circuit.

## 技术参数 Technical Parameters

- 电压:AC/DC-6V、12V、24V、48V、AC-110V、220V、380V
- 发光颜色:R-红 G-绿 Y-黄 bl-兰 W-白
- Voltage:AC/DC-6V、12V、24V、48V、AC-110V、220V、380V
- Color:R- Red G- green B-blue Y- yellow W-white

## 结构特征 Architectural Feature

- 耐振动、抗冲击
- 光线柔和, 色质匀称
- 安全性能高、使用方便
- 体积小、重量轻、性能好
- 产品造型美观, 品种多样
- 宽电源电压, 波动允差  $\pm 10$
- Resistant to vibration, shock
- Soft light, color quality symmetry
- High safety performance, ease of use
- Small size, light weight, good performance
- Products handsome in appearance, species diversity
- Wide supply voltage fluctuation tolerance  $\pm 10$

## 工作条件 Working Conditions

- 环境温度:  $-5^{\circ}\text{C} \sim +40^{\circ}\text{C}$ , 日平均温度  $\leq +35^{\circ}\text{C}$
- 相对湿度:  $40^{\circ}\text{C}$  ( $\leq 50\%$ )、 $20^{\circ}\text{C}$  ( $90\%$ )
- 海拔高度:  $\leq 2000\text{m}$
- 污染级别: 3级
- 安装类别: III 类
- 安装尺寸: M16、M22、M25、39x31、77x31
- Ambient temperature:  $-20^{\circ}\text{C} \sim +50^{\circ}\text{C}$ , the average temperature  $\leq +35^{\circ}\text{C}$
- Relative humidity:  $40^{\circ}\text{C}$  ( $\leq 50\%$ ),  $20^{\circ}\text{C}$  ( $90\%$ )
- Altitude:  $\leq 2000\text{m}$
- Pollution level: 3
- Installation category: III class
- Installation size: M16、M22、M25、39x31、77x31

# AD16C

## COPPER BODY SIGNAL LAMP

### 铜壳信号灯



### 适用范围 Application

AD16C系列金属壳小型信号灯适用于交直流电压50Hz/60Hz,直流额定电压至220V及以下,在电气线路中作为指挥信号,事故信号及其他指示信号之用。

AD16C series of small metal shell lights suitable for AC and DC voltage 50Hz / 60Hz, rated DC Pressure to 220V and below, as the command signal, accident signal and other instructions with the signal of the electrical circuit.

### 技术参数 Technical Data

- 电压:AC/DC-6V、12V、24V、48V、AC-110V、220V、380V
- 发光颜色:R-红 G-绿 Y-黄 bl-兰 W-白
- 尺寸::6mm,8mm,10mm,12mm,14mm,16mm
- Voltage:AC/DC-6V、12V、24V、48V、AC-110V、220V、380V
- Color:R- Red G- green B-blue Y- yellow W-white
- Size:6mm,8mm,10mm,12mm,14mm,16mm

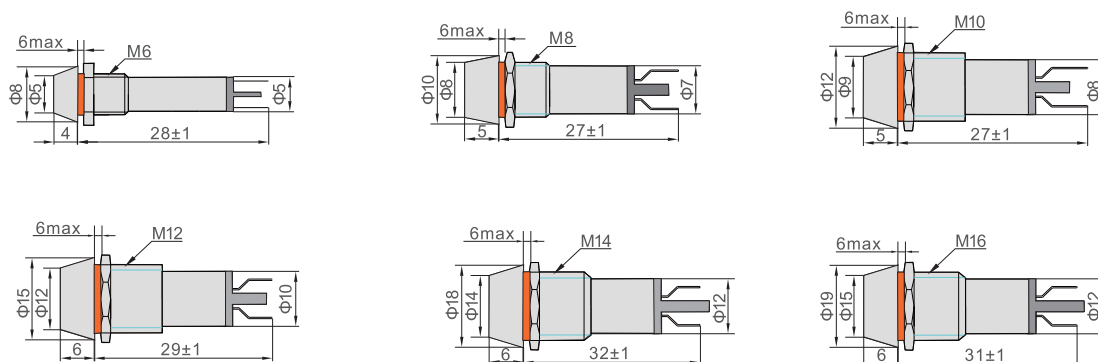
### 结构特征 Architectural Feature

- 光线聚集、明亮清晰,色泽匀称
- 耐振动、抗冲击,适合空间狭小柜体
- 壳体采用H62Y材质镀镍,美观大方
- Disassembly is convenient, easy to use
- Soft light, color quality symmetry
- Color with LED light, long life, energy saving, environmental protection, low-carbon

### 工作条件 Working Conditions

- 环境温度:-5℃~+40℃,日平均温度 $\leq$ +35℃
- 相对湿度:40℃ ( $\leq$ 50%)、20℃ (90%)
- 海拔高度: $\leq$ 2000m
- 污染级别:3级
- 安装类别:Ⅲ类
- 安装尺寸:M6、M8、M10、M12、M14、M16
- Ambient temperature: -20℃ ~ +50℃, the average temperature  $\leq$  +35℃
- Relative humidity: 40℃ ( $\leq$ 50%), 20℃ (90%)
- Altitude:  $\leq$ 2000m
- Pollution level: 3
- Installation category: Ⅲ class
- Installation size: M6, M8, M10, M12, M14, M16

### 产品外形图 Dimension



# BA9S&E10

## LED BEADS

### 灯珠



BA9S



E10

## 适用范围 Application

BA系列卡口式、E系列螺口式灯珠适用于交直流电压50Hz,额定电压在6V~220V间的仪器仪表、电工电表、家用电器、车载电器、控制电器等电器线路中,作电器信号、指示之用途。

BA series bayonet, E Series screw type lamp beads suitable for AC and DC voltage 50Hz, rated voltage 6V ~ 220V between instruments, electrical meters, home appliances, automotive electronics, electrical appliances and other electrical control line Path, for electrical appliances signal indicative of.

## 工作条件 Working Conditions

- 环境温度:  $-20^{\circ}\text{C} \sim +50^{\circ}\text{C}$ , 日平均温度  $\leq +35^{\circ}\text{C}$
- 相对湿度:  $40^{\circ}\text{C}$  ( $\leq 50\%$ )、 $20^{\circ}\text{C}$  ( $90\%$ )
- 海拔高度:  $\leq 2000\text{m}$
- 污染级别: 3级
- 安装类别: III 类
- Ambient temperature:  $-20^{\circ}\text{C} \sim +50^{\circ}\text{C}$ , the average temperature  $\leq +35^{\circ}\text{C}$
- Relative humidity:  $40^{\circ}\text{C}$  ( $\leq 50\%$ ),  $20^{\circ}\text{C}$  ( $90\%$ )
- Altitude:  $\leq 2000\text{m}$
- Pollution level: 3
- Installation category: III class

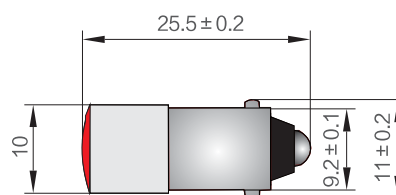
## 技术参数 Model And Meaning

- 工作电压: AC/DC-6V, 12V, 24V, 48V, 110V, 220V
- 颜色: R-红 G-绿 Y-黄 B-蓝 W-白
- Voltage: AC/DC-6V, 12V, 24V, 48V, 110V, 220V
- Color: R- Red G- green B- blue Y- yellow W- white

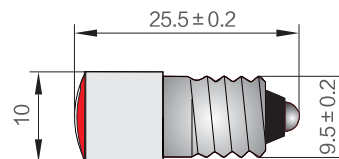
## 结构特征 Architectural Feature

- 拆装简捷, 使用方便
- 光线柔和, 色质匀称
- 彩用LED发光, 寿命长, 节能、环保、低碳
- Disassembly is convenient, easy to use
- Soft light, color quality symmetry
- Color with LED light, long life, energy saving, environmental protection, low-carbon

## 产品外形图 Dimension



BA9S



E10



## BA9S&E10系列 Series

产品描述	工作电流 ≤(mA)	发光亮度 (cd/m <sup>2</sup> ) 允差 ±20%	光波长 (nm) 允差 ±5%	LED芯片数 (芯)
AC/DC6V 红	20	2000	620	1&2
AC/DC6V 绿	20	2700	525	1
AC/DC6V 黄	20	1500	585	1&2
AC/DC6V 蓝	20/40	850	470	1&2
AC/DC6V 白	20	2450	X=0.31 Y=0.32	1
AC/DC12V 红	20	2000	620	1&2
AC/DC12V 绿	20	2700	525	1
AC/DC12V 黄	20	1500	585	1&2
AC/DC12V 蓝	20	850	470	1&2
AC/DC12V 白	20	2450	X=0.31 Y=0.32	1
AC/DC24V 红	20	2000	620	1&2
AC/DC24V 绿	20	2700	525	1
AC/DC24V 黄	20	1500	585	1&2
AC/DC24V 蓝	20	850	470	1&2
AC/DC24V 白	20	2450	X=0.31 Y=0.32	1
AC/DC110V 红	5	600	620	1&2
AC/DC110V 绿	5	950	525	1&2
AC/DC110V 黄	5	900	585	1&2
AC/DC110V 蓝	5	500	470	1&2
AC/DC110V 白	5	2300	X=0.31 Y=0.32	1&2
AC/DC220V 红	3	460	620	2&4
AC/DC220V 绿	3	550	525	2&4
AC/DC220V 黄	3	850	585	2&4
AC/DC220V 蓝	3	330	470	2&4
AC/DC220V 白	3	1200	X=0.31 Y=0.32	1&2&4

Explain:

- 1.\* Represents specification code # indicates the number of light-emitting chips
- 2.E10 product code, please explain the meaning of the replacement by model
3. Other voltage can be customized, the price is negotiable